

MAT USB Driver Upgrade Instructions for Windows XP

Follow the steps below to upgrade MAT USB drivers on your PC to version 4.0.4232. This driver upgrade applies to Microsoft ActiveSync version 4.2.

1. Unzip **usb08.zip** to a temporary folder on your PC. There are two files in this zipped file: *wceusbsh.inf* and *wceusbsh.sys*.
2. Connect the MAT to the PC with ActiveSync 4.2. Please upgrade ActiveSync to v4.2 if you have earlier versions running on your PC. ActiveSync upgrade can be downloaded from <http://www.microsoft.com/downloads/details.aspx?FamilyID=7269173a-28bf-4cac-a682-58d3233efb4c&displaylang=en>
3. On the PC, navigate to **Control Panel->System->Hardware->Device Manager**.
4. Expand the **Windows CE USB Devices** entry. Figure 1.

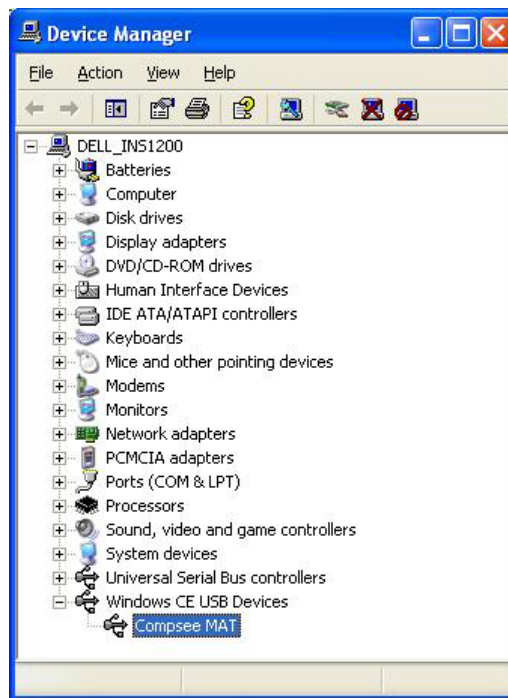


Figure 1 Device Manager on the PC

5. Right click on the "**Compsee MAT**" entry and choose Properties.
6. Click the "Driver" tab. Make note of the "Driver Version". Figure 2.

MAT USB Driver Upgrade Instructions for Windows XP

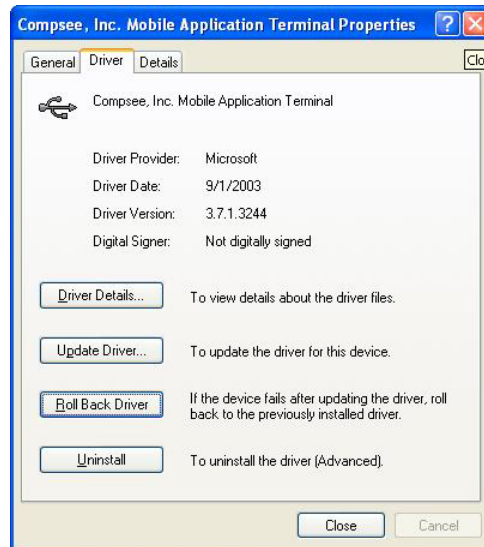


Figure 2 Driver version information and update button

7. Click "Update Driver". Hardware Update Wizard will lead you after this point and the following dialog box will appear. Select "No, not this time" and click on Next. Figure 3.



Figure 3 Hardware Update Wizard

8. Select the "Advanced" option to specify a specific location for the USB drivers. Figure 4.

MAT USB Driver Upgrade Instructions for Windows XP

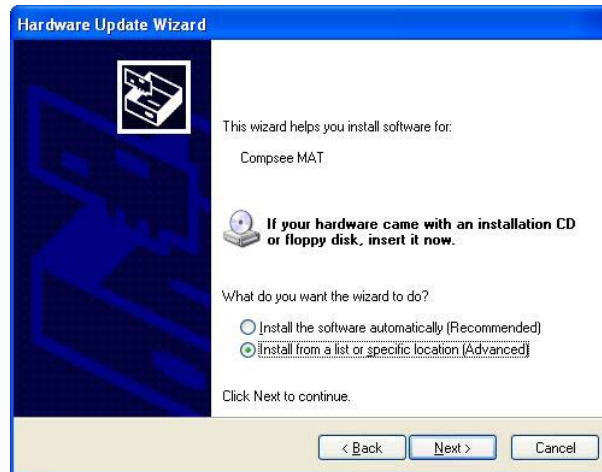


Figure 4 Select Advance option for installation

9. In the next dialog, select “Search for the best driver in these locations” option. Check the “Include this location in the search” box and browse to the folder used in Step #1. After locating the folder, click on the “Next” button on this dialog box to continue. Figure 5.

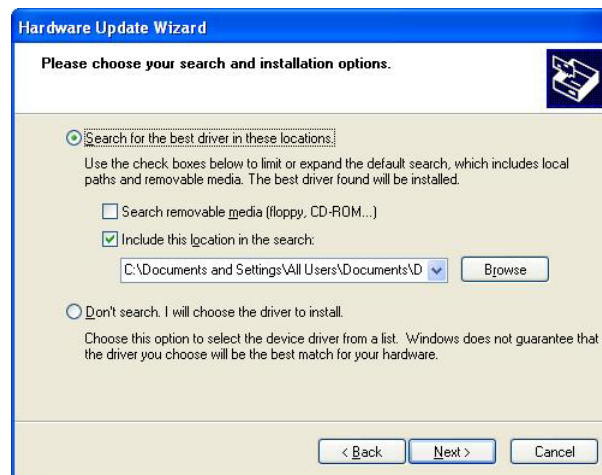


Figure 5 Browse to the folder with the new drivers

10. After the installation starts, a warning dialog as in Figure 6 appears. Click on “Continue Anyway” to finish installation.

MAT USB Driver Upgrade Instructions for Windows XP



Figure 6 Warning dialog for the drivers

11. At the end of installation, PC reboot option will come up automatically. This is necessary for the new drivers to take effect.
12. After reboot, go back to the Driver properties (steps 3 through 6) and note the driver version. It should now be 4.0.4232.0. Figure 7.



Figure 7 Driver details after installation is complete