

Bluetooth Installation Instructions For M.A.T.

Rev 2.0

Copy the file **BtStack.CENETPPCARMV4.CAB** to the MAT using the ActiveSync connection. This is found on Compsee's Web Site in the Bluetooth Driver at: <http://www.compsee.com/Products/MAT/MAT-ProductSupport.htm>

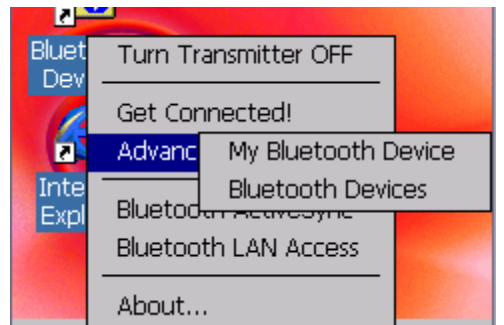
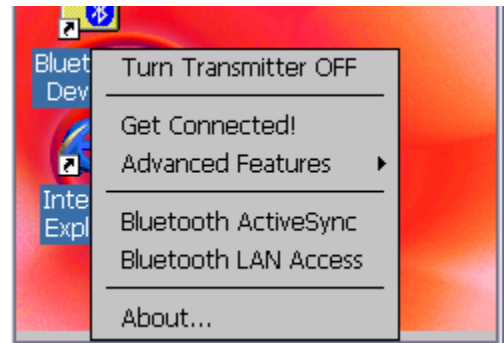
Double click the file to start the installation.

Once installed, the connection between the MAT and the printer needs to be setup. Click on the BT logo (Circled below) on the taskbar.



The Following Menu will appear.

Select Advanced Features / My Bluetooth Device and Bluetooth Devices



Corporate Headquarters
PO Box 1209
Mt. Gilead, NC 27306



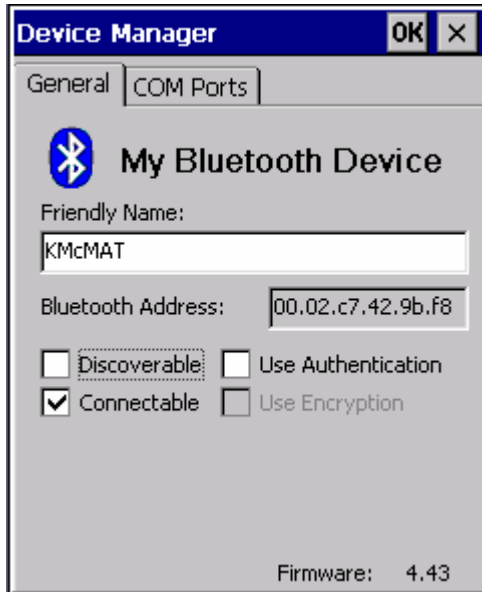
International Sales Office
304 E. Strawbridge Ave
Melbourne, FL 32901

Under Device Manager, General Tab, set up the Friendly Name, and check only the Connectable checkbox.

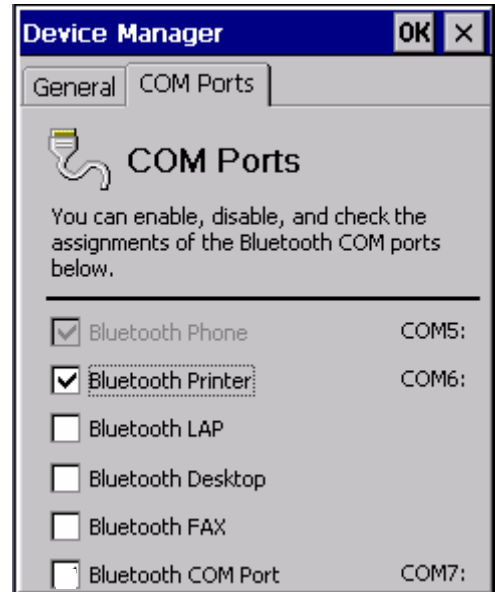
Under the COM Ports tab, check only Bluetooth Printer. Take note of the COM Port indicated.

My Bluetooth Device

General Tab



COM Ports Tab



Corporate Headquarters
PO Box 1209
Mt. Gilead, NC 27306

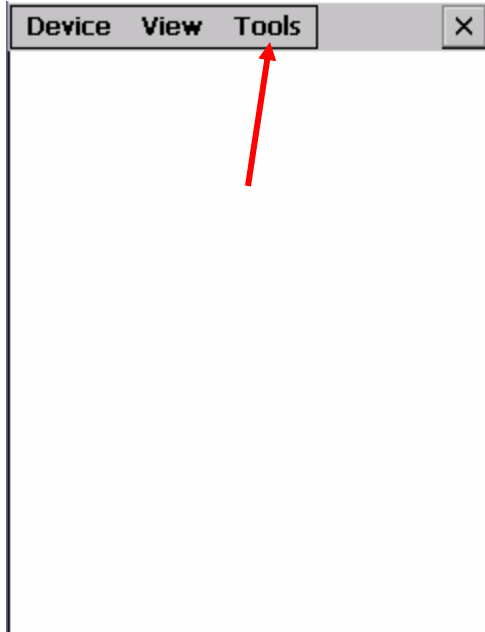


International Sales Office
304 E. Strawbridge Ave
Melbourne, FL 32901

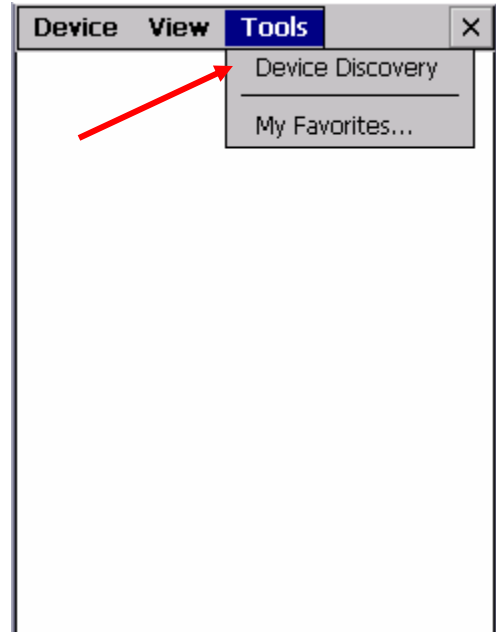
Bluetooth Devices

If no Bluetooth device is indicated, then step through Device Discovery

Step 1



Step 2

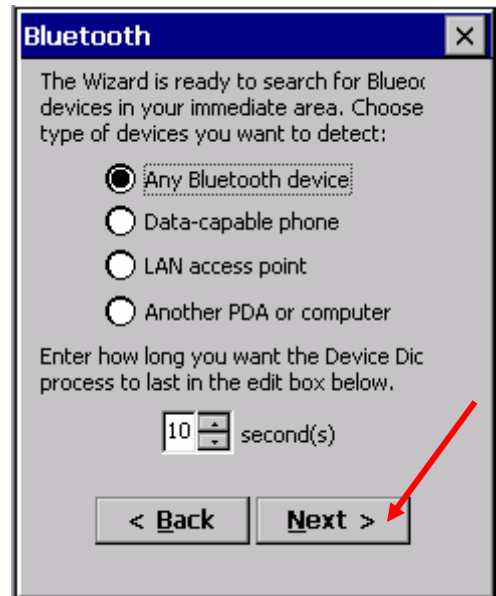


Step 3



**Turn
ON
The
Printer**

Step 4

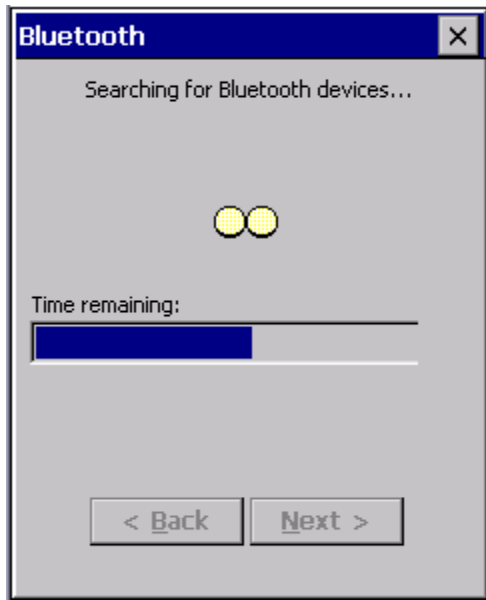


Corporate Headquarters
PO Box 1209
Mt. Gilead, NC 27306

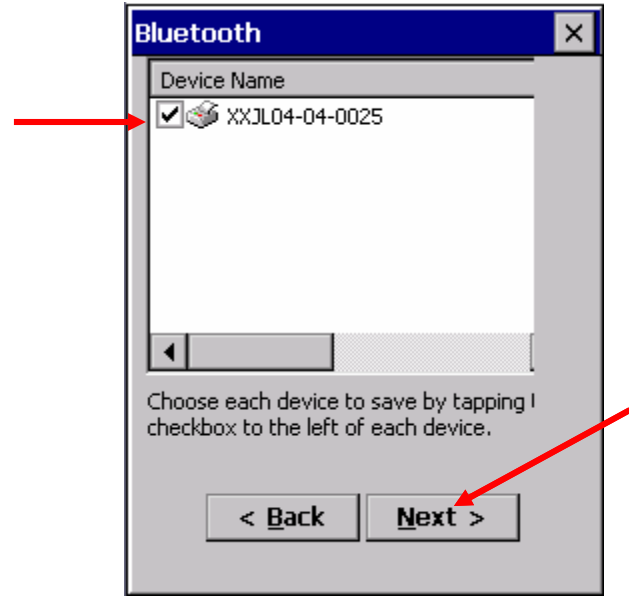


International Sales Office
304 E. Strawbridge Ave
Melbourne, FL 32901

Step 5

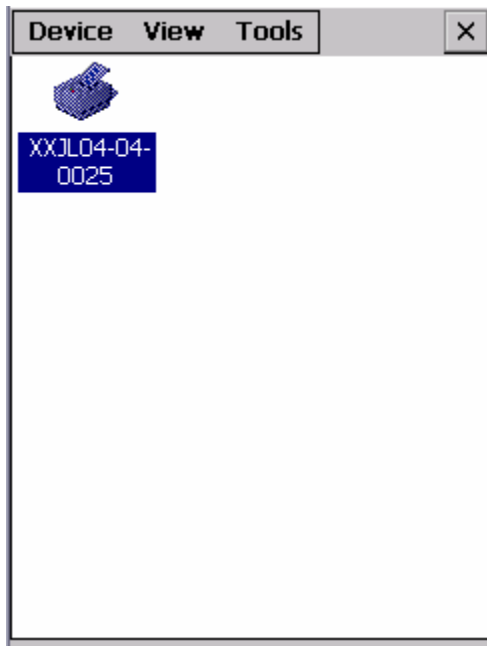


Step 6



Printer must be turned on.

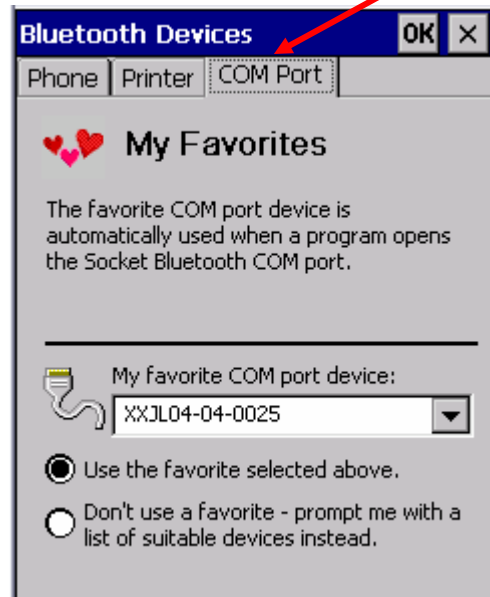
Step 7



Once the printer has been discovered set it up as a Favorite (Default) by selecting Tools / My Favorites.. from the menu bar.

Set up Favorites

Step 8



Select "Use the Favorite" on both the Printer and COM Port tabs and press OK. The printer should now have a heart displayed beside it.