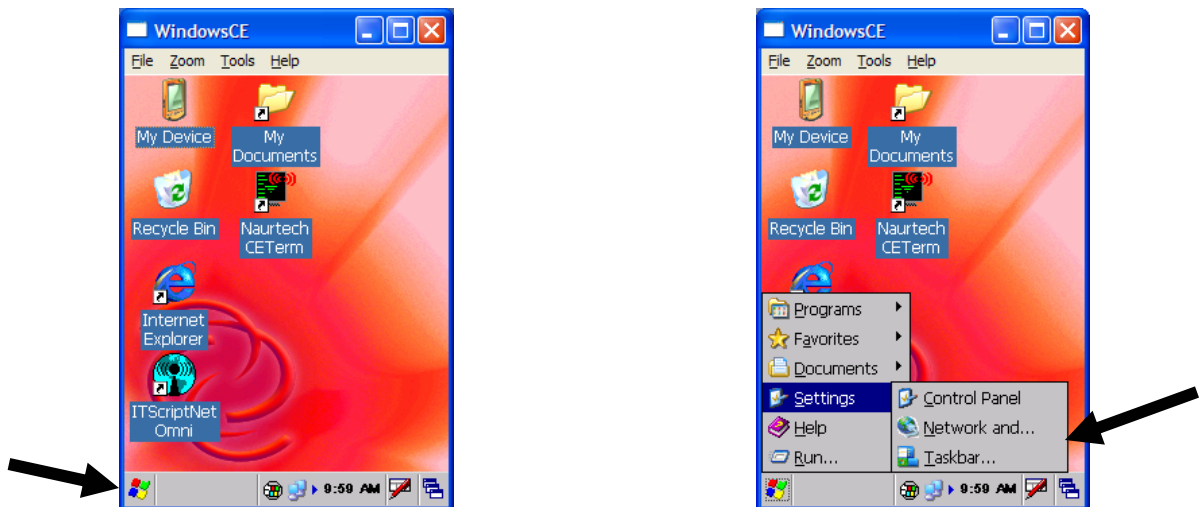


MAT Terminal WLAN Configuration

1. To configure the MAT for your LAN you will need to setup the unit with the appropriate IP address. The default setting is DHCP, which means that if your network has a DHCP server running, it will assign the MAT all of the appropriate network information once it recognizes it on the network as a new device.

If you do not have a DHCP server running in your environment then your IT department will have to give you the appropriate IP information for each device. **This is known as assigning a Static IP address.**

2. To set the IP configuration appropriately for your network, click on the START button and then click Settings and Network and Dialup.



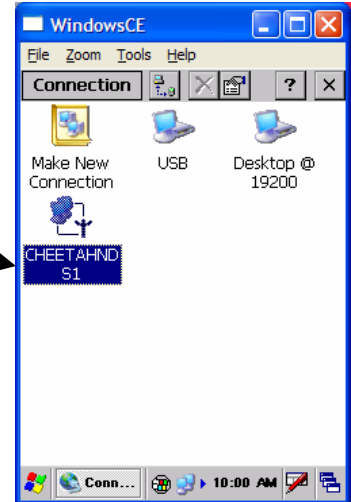
Corporate Headquarters
PO Box 1209
Mt. Gilead, NC 27306



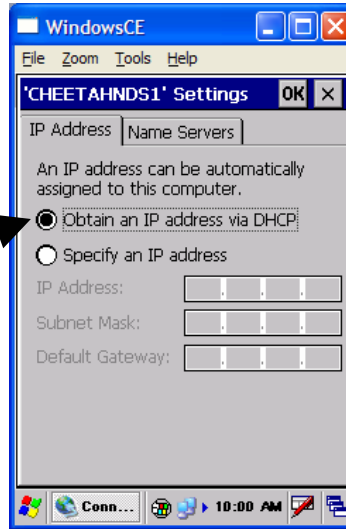
International Sales Office
304 E. Strawbridge Ave.
Melbourne, FL 32901

MAT – WLAN Configuration

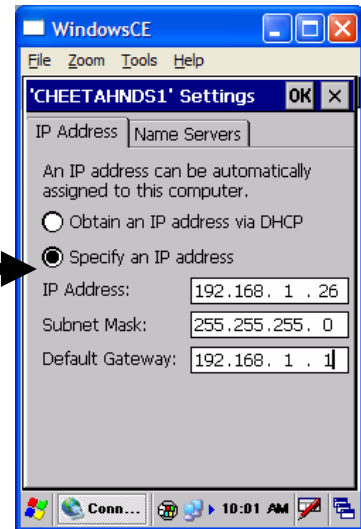
3. Once the Network and Dialup screen appear, double-click the CHEETAHNDS1 icon.



4. If your network is using a DHCP server to automatically assign the network information, then highlight the “Obtain an IP via DHCP” option in the IP Address tab. Then click **OK**.



5. If you are using Static IP address settings, then highlight the “Specify an IP address” option in the IP Address tab. Then click in each box to enter the correct network information. You will need to acquire the correct information from the IT department to prevent duplicate IP addressing on the network.



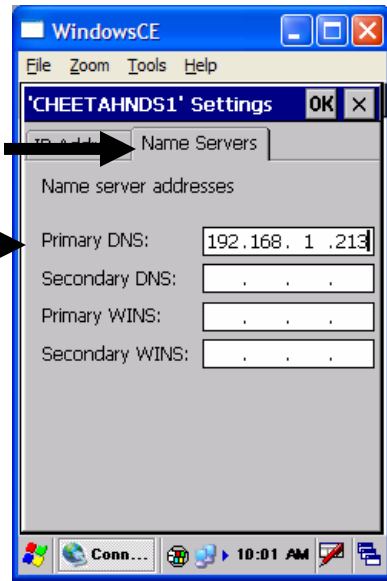
Corporate Headquarters
PO Box 1209
Mt. Gilead, NC 27306



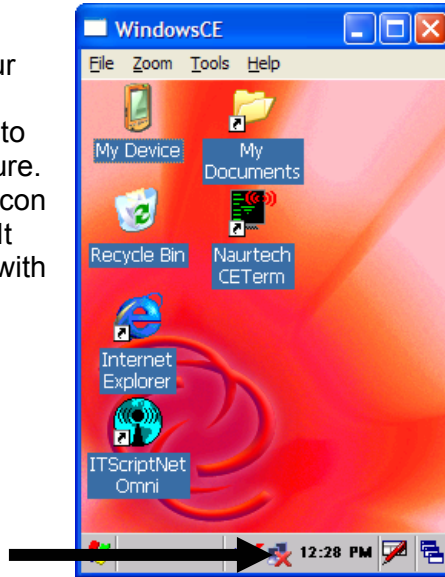
International Sales Office
304 E. Strawbridge Ave.
Melbourne, FL 32901

MAT – WLAN Configuration

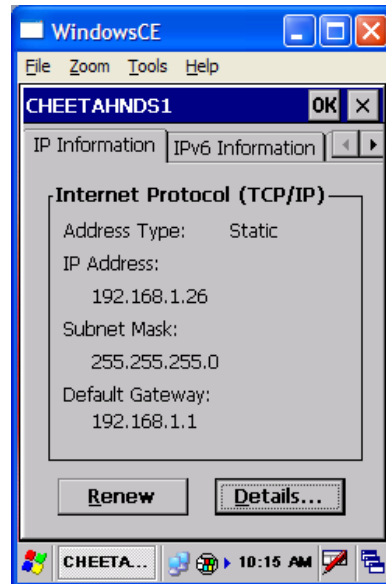
- 6. If your network uses DNS then click on the Name Servers tab and highlight each Box required, and enter the appropriate addresses. Then click OK.



- 7. Now that the LAN information has been entered you can add your wireless LAN (WLAN) profile to get associated to your wireless infrastructure. Double-click the WLAN icon in the bottom task tray. It should be two-monitors with an X over top.



- 8. This will bring up the WLAN configuration utility. You will have three tabs at the top: IP Information, IPv6 Information and if you scroll to the right, Wireless Information.



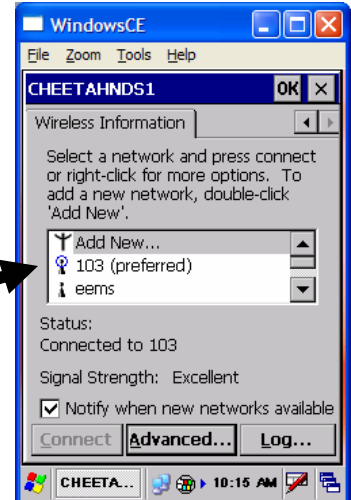
Corporate Headquarters
PO Box 1209
Mt. Gilead, NC 27306



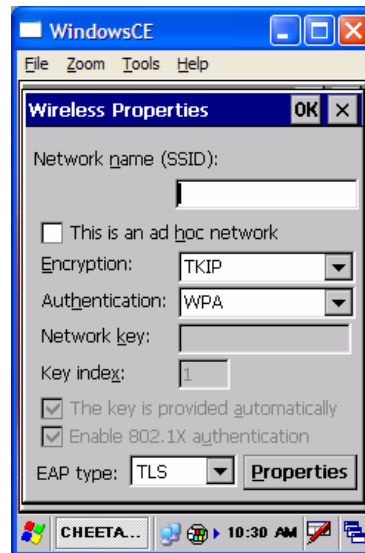
International Sales Office
304 E. Strawbridge Ave.
Melbourne, FL 32901

MAT – WLAN Configuration

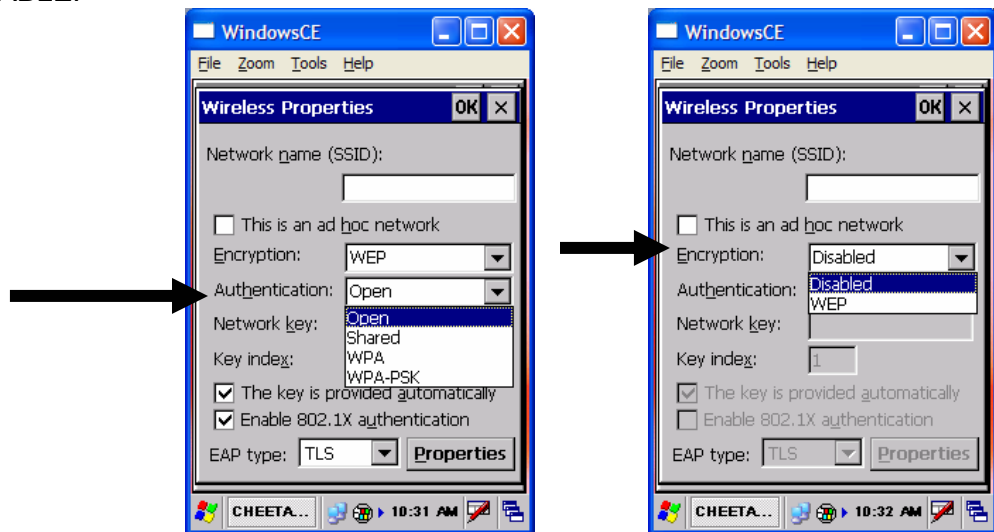
9. Scroll to the right and click on the Wireless Information tab. If you are broadcasting your SSID over the wireless network, your WLAN's SSID will be listed in the WLAN profile window under Add New.... If so, you can double click on your WLAN to configure the security and get connected. If no WLAN is listed, then your network may not be broadcasting your SSID. If this is the case, you will need to manually add a new WLAN profile. Just double-click on Add New...



10. This is the default screen for a new WLAN profile. You will need to set your security requirements to match your wireless infrastructure.



11. If your WLAN does not use any security, then it is considered an open network (not recommended). If this is the case, then you will need to click on the drop-down box for Authentication and change it to OPEN. Then click on the Encryption drop-down box and select DISABLE.



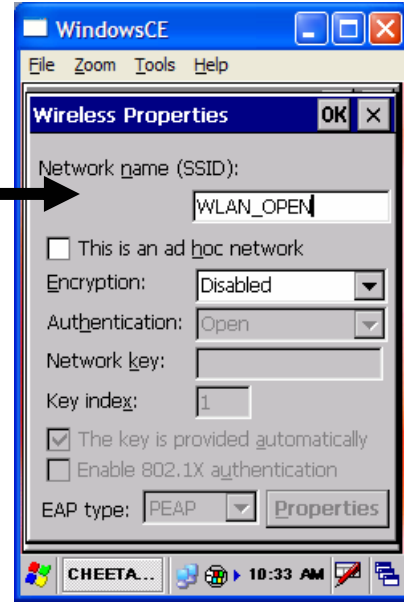
Corporate Headquarters
PO Box 1209
Mt. Gilead, NC 27306



International Sales Office
304 E. Strawbridge Ave.
Melbourne, FL 32901

MAT – WLAN Configuration

12. Next, enter your SSID in the Network name box and click OK.



13. If your WLAN is more secure, you will need to modify the Authentication and Encryption options to match your security scheme. If you are using EAP, make sure to select TLS (if you are using managed client-side certificates) or PEAP if you are using server assigned certificates based on user login credentials). Be sure to click the Properties button and **uncheck** the Validate Server option.



14. Finally, once all LAN and WLAN settings are complete, you will need to restart your MAT for the changes to be saved to FLASH storage. Go to START>Programs>Restart. Click the Yes button when prompted with the RESTARTING SYSTEM box. When the MAT is back up and running, the WLAN icon in the bottom task tray should change from two-monitors with and X over top to two blue monitors. This indicates association to an access point. You are now connected to your Wireless network.

Corporate Headquarters
PO Box 1209
Mt. Gilead, NC 27306



International Sales Office
304 E. Strawbridge Ave.
Melbourne, FL 32901